

Campus & Support Centres

Bring Quality Training to Everybody

54 million people live in South Africa. Of these about 9 Million live in the 20 largest cities we have. These are near Universities. The other 45 mil or 83% do not live near the Universities and do not have the money to pay the rent for a room near college, while also not working work. To bring quality training to everybody, takes a different approach. CLT has such a plan.

- See the next page illustration: *Calvary Organisational Matters*

1. 40 Support Centres

Calvary's organisation will be established in 40 **Support Centres** in 8 regions (i.e. around 8 campuses). Exactly what these will look like, we do not know. Some may be existing Bible Schools or rented property. This will be CLT decentralised organisation on a country-wide basis. Their (**SC**) mandate:

2. Establishing Colleges

SC's will be asked to strategically plan the establishment of "Community Colleges" all over the country. A Support Centre could on average set up 10 Bible Schools (or Colleges) who offer 80-credit short courses. For many people these courses are just what they need to improve their lives and experience. For some it will be credits they can offer as part of a qualification they wish to acquire. These colleges will offer something they cannot otherwise get.

The colleges will be run by local academics, using CLT books and the **CAP**. An **administrator** organises the activities and pay local qualified lecturers.

3. Lecturing Bachelor Students

It is at these places where we will organise lectures to be presented on a monthly basis (on Saturdays) for students who are enrolled for a Bachelor. This will be facilitated in the fields of Ministry, Counselling, Education and Business leadership/administration. Students attend 5 to 10 Saturdays per year.

4. Providing Material Sets

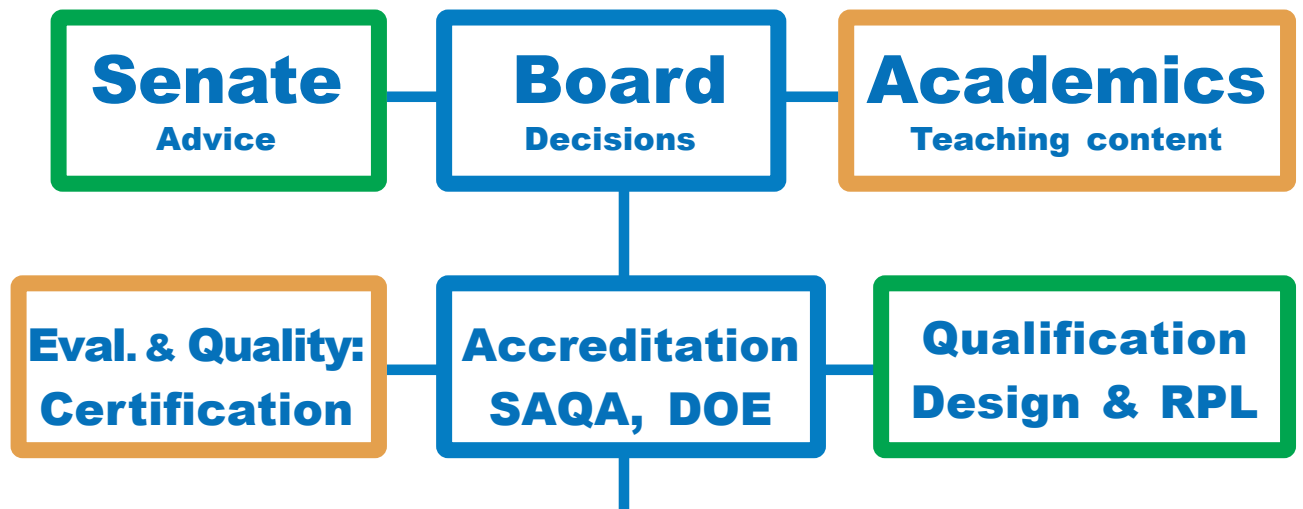
As the students increase in number we may stock **whole sets** of material for the different popular Phases. There are going to be 30 Phases. Single books must then still be obtained from CLT Pretoria. It all depends on demand.

5. 8 Campuses: Administration, Postgraduate

In 8 of these Support Centres we will establish regional Administrations we call a "Campus". This administration centre will be responsible for about **5 Support Centres** in its region. The Support Centres will report to them and obtain stock from them or place orders through them from Pretoria. A campus will also offer postgraduate training for the region (Masters and Doctorate).

Structure of Calvary University

Governed by leadership structures:



Country-wide training through: **Calvary Colleges**



A campus sets up on average 5 **CLT area Support Centres** (40):



An SC sets up on average 10 **Calvary Colleges for 23 students** (400):



Calvary short-course training will become the chosen way of student-life!